



Morgans

PROPERTY

28 Birrell Drive, Dunfermline, KY11 8DW

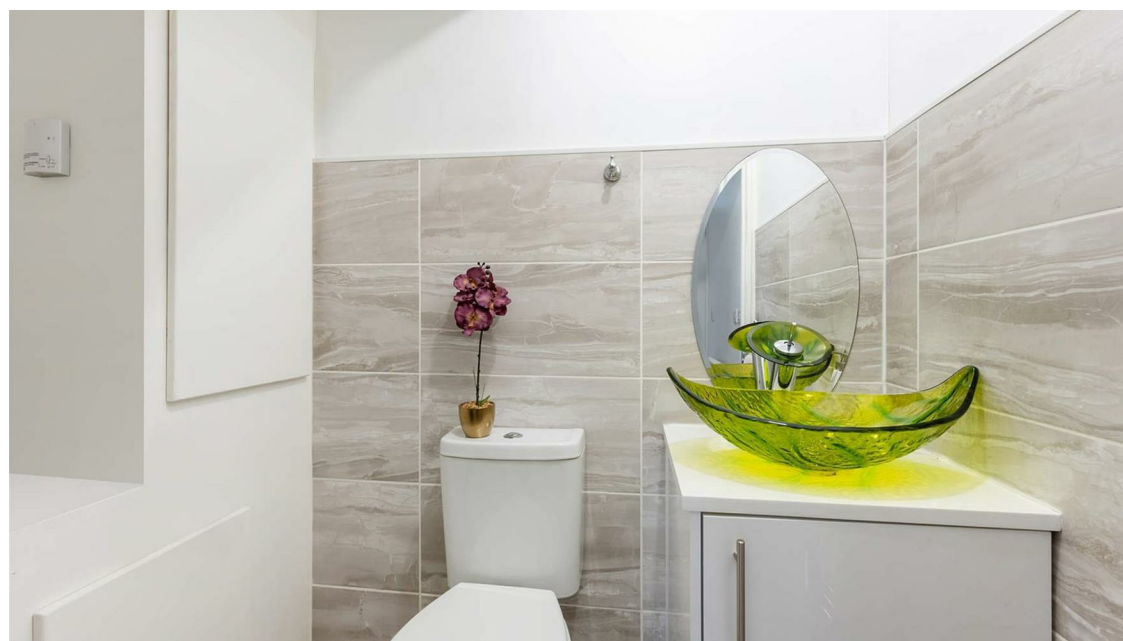
Offers Over £200,000







Absolutely stunning family home situated in the ever popular Pitcorthie estate close to all amenities and schooling. This semi detached villa has been completely renovated from top to bottom by the present owners and is offered in move in condition with quality fixtures and fittings and bespoke design features to name but a few of the enhancements. The subjects are on an enviable plot with excellent outdoor space, driveway for several vehicles and detached garage. The plot is fully enclosed providing a child and pet safe environment with patio area and well established gardens to front and rear. The accommodation briefly comprises reception hall, w.c facilities, stunning open plan lounge/dining/kitchen with French doors out to landscaped rear garden. On the upper level there are three bedrooms and shower room. This excellent family home must be viewed to be appreciated. Gas central heating and double glazed throughout.





EXTRAS INC IN SALE

All fitted floor coverings, blinds, bathroom and light fittings together with any integrated appliances.

VIEWINGS

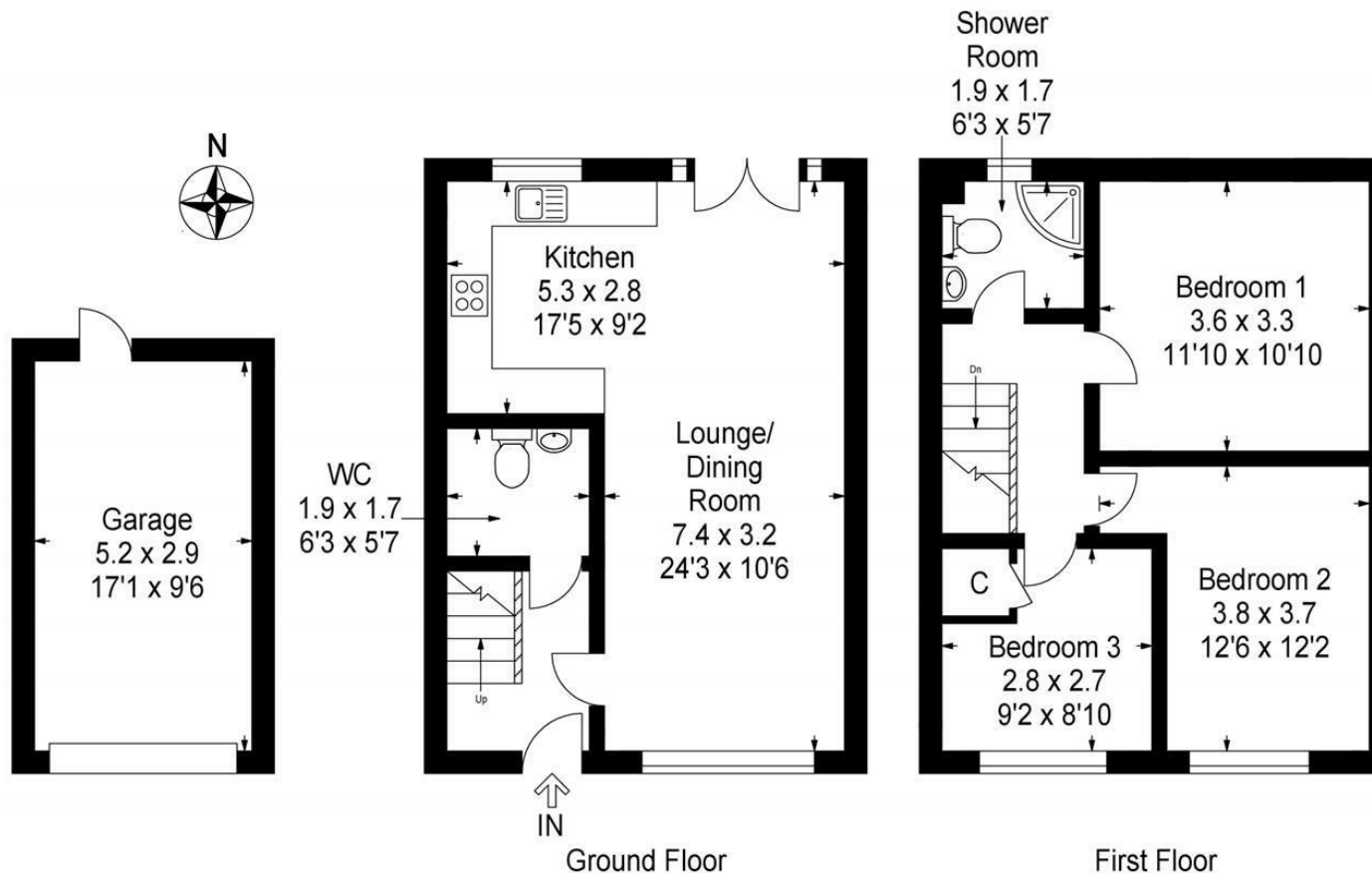
All viewings by appointment via Morgans on 01383 620222.

TRAVEL DIRECTIONS

Using Google Maps, enter the property postcode KY11 8DW and follow the directions. Number 28 will be indicated by our For Sale Board.







This plan is for layout guidance only and is not drawn to scale. Whilst every care is taken in the preparation of this plan, please check all dimension and shapes before making any decision reliant upon them. All room dimensions taken through cupboard/wardrobes to wall surface where possible or to surfaces indicated by arrow heads. (ID 110927)

© VistaBee 2022



SOLICITORS | PROPERTY

33 East Port, Dunfermline, Fife, KY12 7JE

Tel: 01383 620222 Fax: 01383 621213

www.morganlaw.co.uk



espc

s1homes.com

rightmove

Zoopa.co.uk

onTheMarket.com



AGENTS NOTE These particulars do not form part of any contract and the statements or plans contained herein are not warranted nor to scale. Approximate measurements have been taken by electronic device at the widest point. Services and appliances have not been tested for efficiency or safety and no warranty is given as to their compliance with any Regulations. No movable items will be included in the sale.